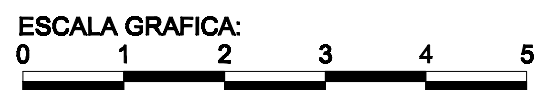
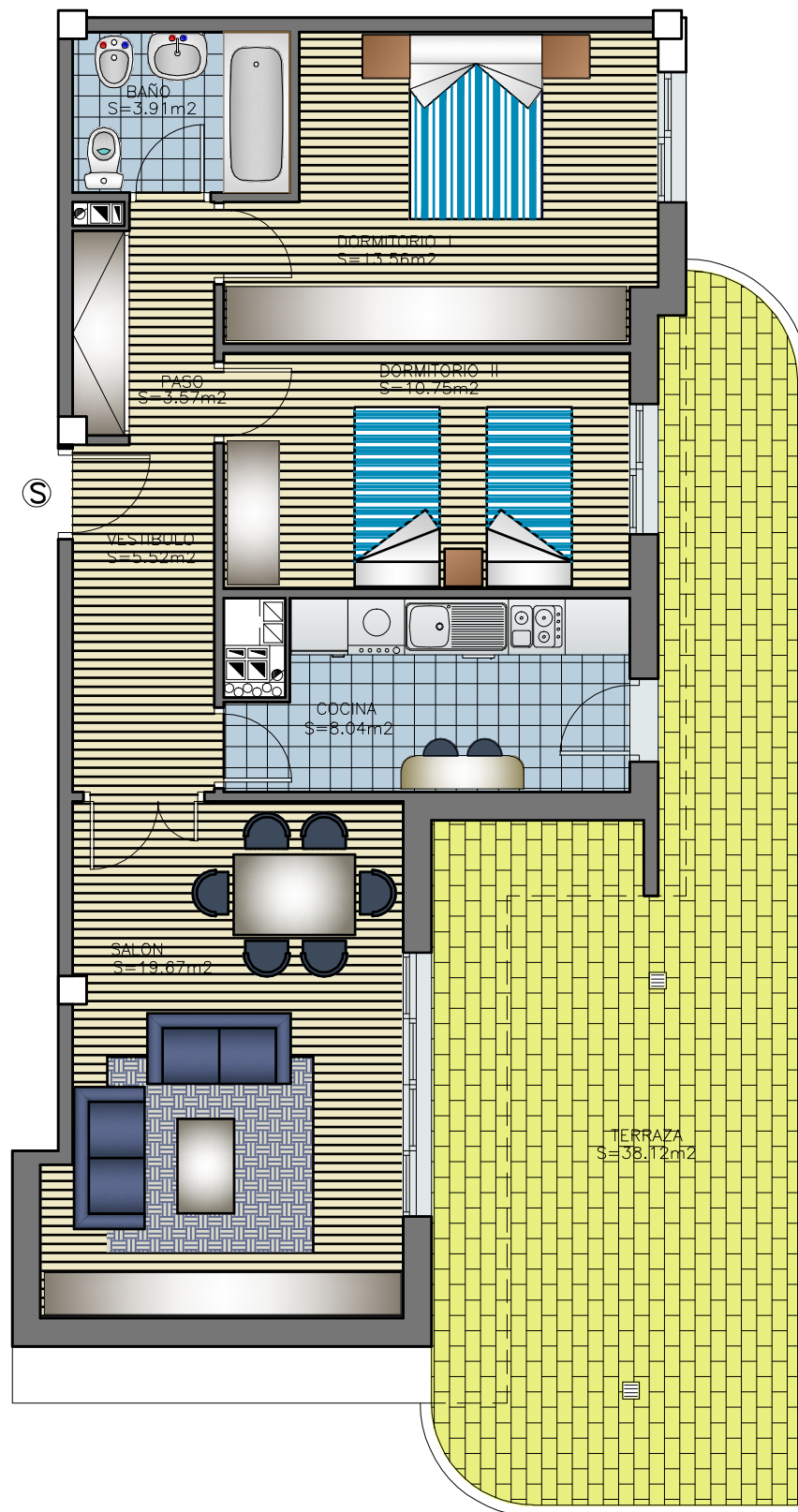
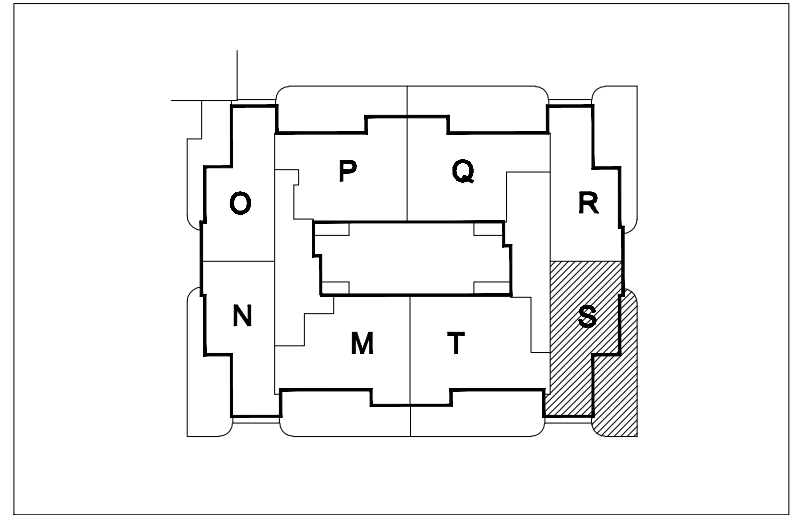




**EDIFICIO "REY FERNANDO"  
VIVIENDAS DE PROTECCION  
OFICIAL PARA ALQUILER**



**Piso S PLANTA SEXTA**

**SUP. UTIL INTERIOR**

**65.02 m<sup>2</sup>**

**SUP. UTIL TOTAL CON TERRAZAS**

**103.14 m<sup>2</sup>**